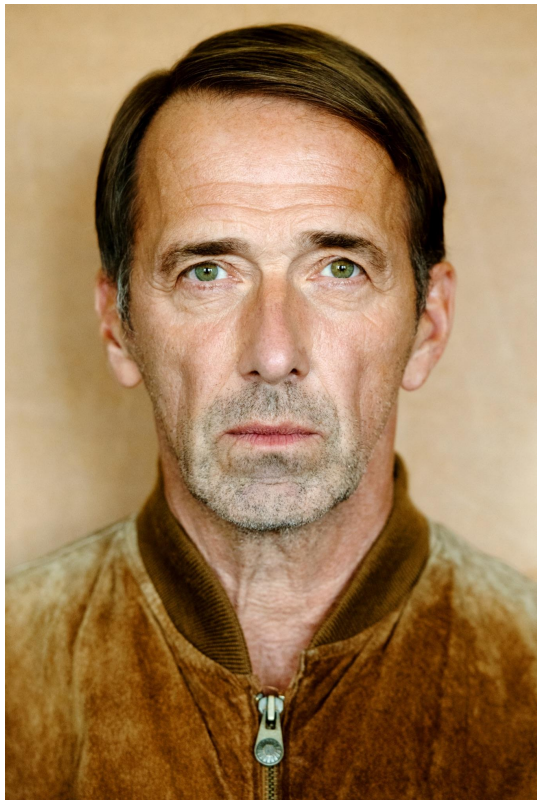


Caprice Crawford | Founder

Crawford Talents International Actors Management Agency
Uhlandstrasse 53 | Berlin 10719 | M +49 172 30 88868

MICHAEL STOBBE



Nationality: German

Height: 6'3" (193cm)

Playing Age: 47 - 56 years

Appearance: European, slim

Eye Colour: green

Hair Colour: blond / Braun

Hair Length: Short

Voice: baritone

Voice Character: warm

Location: Berlin / Hamburg / München / Köln / London / Los Angeles

LANGUAGES / ACCENTS & DIALECTS

German | basic English | beginner Spanish | beginner French

Dialects - Ruhrgebiet, Norddeutsch, Berlinerisch

EDUCATION | TRAINING

Berliner Theaterschule (1989 - 1992)

SKILLS

piano (highly-skilled), guitar (basic)

SPORT

Basketball

movie | |tv | theater

movie selection

2022 Der Nöck

Kurzfilm / directed by Johannes Jungehülsing | Nöck HR

2021 Auf Teufel komm raus

Kurzfilm / directed by Johannes Jungehülsing | Georg HR

2017 Scheiße war schon immer braun

Miniserie / directed by David Figura | Maries Vater

2014 Die weiße Nacht

cinema short | Raphael Bruggey | Hr Wolke (Hauptrolle)

1991 Die Tigerin

cinema / directed by Karin Howard | Musician

tv selection

2021- 2022 Der Zürich Krimi ARD/Degeto

Tv series, directed by Roland Suso Richter, Connie Walther| Favre recurring Role

2021 - 2022 masters of the air | apple +

Tv series, directed by Dee Rees and Tim Van Patten | Hermann Glemnitz Episode Role

2021 - 2022 Mordach| ARD

Tv series, directed by Roland Suso Richter | Detective 1 Episode Role

2020 Soko Wismar| ZDF

Tv series, directed by Oliver Dommengeset | Michael Mühe Episode Leading Role

2018 Alles oder Nichts|Sat 1

Tv series, directed by Andreas Morell| Heiko Nawrath Episode Role **2018 ZDF | EICHWALD, (AT)**

Tv series, directed by Fabian Möhrke| Dr. Lambert

2018 GZSZ | UFA SERIAL DRAMA GmbH

Tv series, directed by Seyhan Derin | Matthias Becker **2017 Weissensee | ARD**

tv series, directed by: Friedemann Fromm

2012 Alarm für Cobra 11 | RTL

tv series / directed by: Nico Zavelberg

2011 Verbotene Liebe | ARD

tv series, div. episodes, directed by: Lutz von Sicherer / **2010 Vorzimmer zur**

Hölle - streng geheim | ZDF

tv movie / directed by: Michael Keusch | Arzt

2009 Anna und die Liebe | ARD

tv series, div. episodes, directed by: Zsolt Bacs

2009 Küstenwache | ZDF

tv series, directed by: Zbynek Cerven

2009 Terra X - Der Raub der Miona Lisa | ZDF

tv docu - series , directed by Michael Höft

2009 Notruf Hafenkante | ZDF

tv series, directed by: Rolf Wellingerhof

2008 Gute Zeiten Schlechte Zeiten | RTL

daily soap (div episodes, directed by Tina Kritwitz, Jurij Neumann a.o. **2006 Doppelter Einsatz | RTL**

tv series, directed by Christine Hartmann

2003 Balko | RTL

tv series, directed by Uli Möller

2003 Broti und Patek | Sat 1

tv series, directed by Uli Möller

2002 St Angela | NDR

tv series, directed by Sebastian Monk

1998 Die Rettungsflieger | ZDF

tv series, directed by Wolfgang Engelhardt

1998 Gegen den Wind | ARD

tv series, directed by Helmut Krätzig

1997 Alphateam | Sat 1

tv series, directed by Norbert Skrovaneck

1993 Die Bombe tickt | ARD

tv movie, directed by Thorsten Näter

1992 Auf Leben und Tod | RTL

tv series, directed by Sabine Eckhard

THEATRE (selection)

2022 Bar | Potsdam Alexandrowka

directed by Katja Hensel | Leo

2020 - 22 Borderliner | Radialsystem, on Tour

directed by Carsten Goldbeck | Polen

2009 - 2017 Eu only live twice | Schauspielhaus Wien, on tour directed by Uta Krause |

Martin Petschmann

2013 Romeo und Julia | Shakespeare Company Berlin

directed by Christian Leonard | Tybalt, Amme

2011 Das Sparschwein | Schlosstheater Celle

directed by Thomas Blubacher | Bechut

2010 Klink der deutschen Städte | HAU Berlin

directed by Katja Hensel | Halberstadt

2009 Amphitryon | Schlosstheater Celle

directed by Peter Lüder | Amphitryon

2008 Die Grönholm-Methode | Schlosstheater Celle

directed by Thomas Blubacher | Fernando Porta

2006 Revanche | Schlosstheater Celle

directed by Ina Kathrin Korff | Milo

2005/06 Kiss me Kate | Schlosstheater Celle

directed by Peter Lotschak | Gauner

2005 Camelot | Festspiele Bad Hersfeld

directed by Peter Lotschak | Pellinore

2004 Besuch der alten Dame | Festspiele Bad Hersfeld

directed by K.J. Schildknecht | Nüsslin

2004/5 Zwei Herren die den Kopf verlieren (UA) | Kleines Theater Berlin directed by Astrid

Windorf

2002 Mainstream | ehrenfeld-theaterproduktion

directed by Malte Jelden

2001 Lied:Gut | ehrenfeld-theaterproduktion

directed by Oliver Nitsche

1997 - 2000 Rocky Horror Picture Show (Musical) | Stadtheater Bremerhaven directed by Dirk Böhling |

Brad

1997 - 2000 Urfaust | Stadtheater Bremerhaven

directed by Wolfgang Hofmann | Faust

1997 - 2000 Kunst | Stadtheater Bremerhaven

directed by Wolfgang Hofmann | Serge

1997 - 2000 Hase Hase | Stadtheater Bremerhaven

directed by Titus Georgi | Bebert

1997 Sommernachtstraum | Festspiele Dreieich

directed by Jörg Engeroff | Lysander

1993 - 1996 Die Hose | ETA Hoffmann Theater, Bamberg

directed by Gabi Köstler | Mandelstam

1993 - 1996 Dracula (Musical) | ETA Hoffmann Theater, Bamberg directed by Rainer

Lewandowski | Totengräber

1993 - 1996 Dracula (Musical) | ETA Hoffmann Theater, Bamberg

directed by Rainer Lewandowski | Totengräber

1993 - 1996 Linie 1 (Musical) | ETA Hoffmann Theater, Bamberg

directed by Axel Stöcker | div

1993 - 1996 Drei Schwestern | ETA Hoffmann Theater, Bamberg

directed by Michael Seewald | Kulygin

1992 Ich bin ein Frosch, na und (Musical) | Berlin

directed by Christine Brigl | Hans Diet

EDUCATION | TRAINING

Berliner Theaterschule (1989 - 1992)

SKILLS

piano (highly-skilled), guitar (basic)

SPORT

Basketball

CRAWFORDTALENTS



MICHAEL STOBBE

